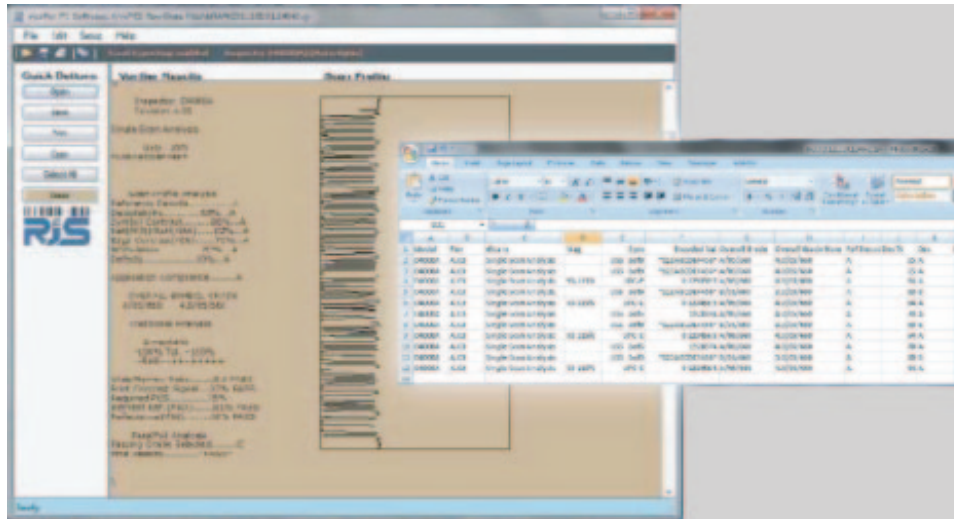


Verifier Computer Interface Report (VCIR)

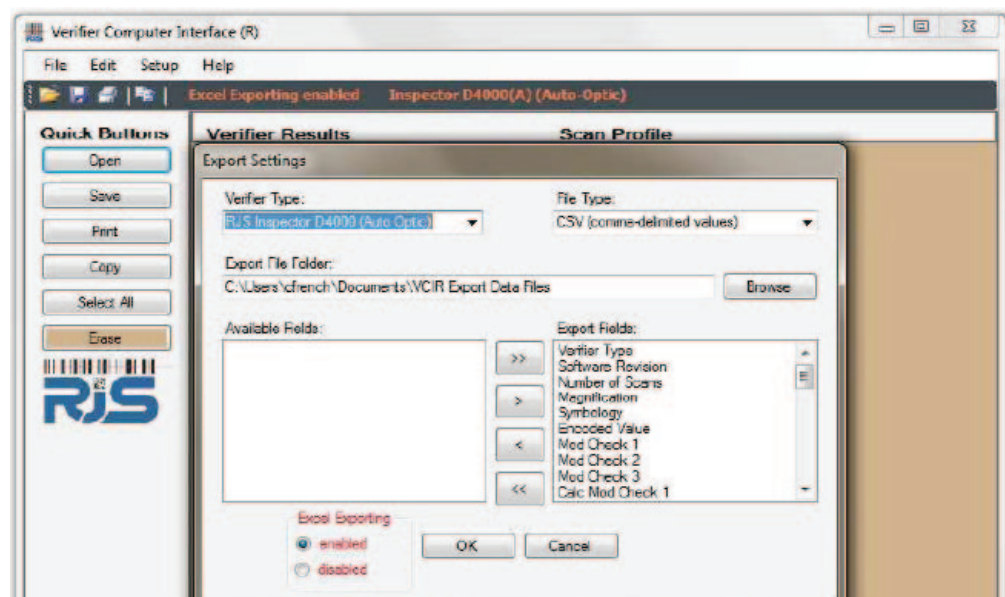
BAR CODE VERIFIER

BY 



Features

- Simple user interface
- Maintain bar code inspection report database (with time and date stamps)
- Custom reports for each job
- Viewable and Printable Scan Reflectance Profile
- Print reports on any standard Windows® printer
- Transfer inspection results into Customer Management or Quality Control software applications
- Compatible verifiers:
 - ✓ RJS Inspector® 5000 (Auto Optic or Laser Gun)
 - ✓ RJS Inspector® Models 1000, 2000, 3000, 4000
 - ✓ RJS Inspector® D4000 (Auto Optic or Laser Gun)
 - ✓ RJS Inspector® GS D4000



BAR CODE VERIFIER BY RJS

Verifier Computer Interface Report (VCIR)

Windows Printer Reports

```

INSPECTOR D4000A
Revision A.03

Single Scan Analysis

USS 3of9
*123456*

Scan Profile Analysis
Reference Decode      A
Decodability         76% A
Symbol Contrast      93% A
Refl (Min)/Refl (Max) 07% A
Edge Contrast (Min)  57% A
MODulation           61% B
Defects              05% A
Application Compliance A

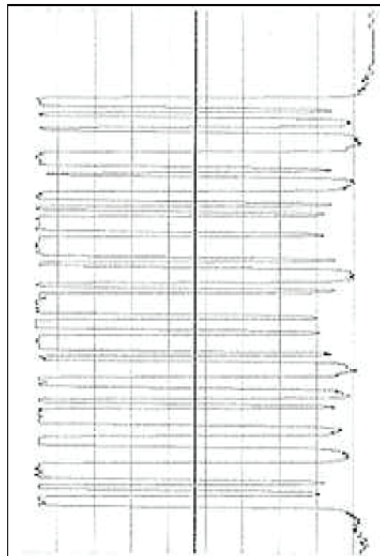
Overall Symbol Grade
B/10/660      3.0/10/660

Traditional Analysis

Acceptable
-100% Tol. +100%
-----RAR+++++

Wide/Narrow Ratio    2.3 PASS
Print Contrast signal 92% PASS
Required PCS         75%
Element Refl. (Max)  92% PASS
Reflectance (Min)    07% PASS

Pass/Fail Analysis
Passing Grade Selected D
Final Results          *PASS*
    
```



OPTIONAL ACCESSORIES

USB to Serial Port Adapter P/N:RJS-USB-to-Serial



Example of an extended report with 12 bar code

| bEXP20111019124642.csv - Microsoft Excel | | | | | | | | | | | | | | | | | |
|---------------------------------------------------------------------|--------|------|----------------------|---------|----------|-----------------|---------------|-------------------|------------|-------|-----|-----------|---------|-------------|-----------|------------|----------|
| Home Insert Page Layout Formulas Data Review View Developer Add-Ins | | | | | | | | | | | | | | | | | |
| G21 | | | | | | | | | | | | | | | | | |
| | A | B | C | D | E | F | G | H | I | J | K | L | M | N | O | P | Q |
| 1 | Model | Rev | #Scans | Mag | Sym | Encoded Val | Overall Grade | Overall Grade Num | Ref Decode | Dec % | Dec | Sym Con % | Sym Con | RMin/RMax % | RMin/RMax | Edge Con % | Edge Con |
| 2 | D4000A | A.03 | Single Scan Analysis | | USS 3of9 | *123ABCEDEF456* | A/05/660 | 4.0/05/660 | A | 65 | A | 80 | A | 2 | A | 70 | A |
| 3 | D4000A | A.03 | Single Scan Analysis | | USS 3of9 | *123ABCEDEF456* | A/05/660 | 4.0/05/660 | A | 65 | A | 80 | A | 2 | A | 70 | A |
| 4 | D4000A | A.03 | Single Scan Analysis | 90-115% | UPC-E | 0 123456 5 | A/05/660 | 4.0/05/660 | A | 64 | A | 81 | A | 1 | A | 69 | A |
| 5 | D4000A | A.03 | Single Scan Analysis | | USS 3of9 | *123ABCEDEF456* | B/05/660 | 3.0/05/660 | A | 60 | B | 79 | A | 1 | A | 68 | A |
| 6 | D4000A | A.03 | Single Scan Analysis | 90-115% | UPC-E | 0 123456 5 | A/05/660 | 4.0/05/660 | A | 64 | A | 81 | A | 1 | A | 69 | A |
| 7 | D4000A | A.03 | Single Scan Analysis | | USS 2of5 | 1928374 | A/05/660 | 4.0/05/660 | A | 70 | A | 80 | A | 1 | A | 71 | A |
| 8 | D4000A | A.03 | Single Scan Analysis | | USS 3of9 | *123ABCEDEF456* | B/05/660 | 3.0/05/660 | A | 60 | B | 79 | A | 1 | A | 68 | A |
| 9 | D4000A | A.03 | Single Scan Analysis | 90-115% | UPC-E | 0 123456 5 | A/05/660 | 4.0/05/660 | A | 64 | A | 81 | A | 1 | A | 69 | A |
| 10 | D4000A | A.03 | Single Scan Analysis | | USS 2of5 | 1928374 | A/05/660 | 4.0/05/660 | A | 70 | A | 80 | A | 1 | A | 71 | A |
| 11 | D4000A | A.03 | Single Scan Analysis | | USS 3of9 | *123ABCEDEF456* | B/05/660 | 3.0/05/660 | A | 60 | B | 79 | A | 1 | A | 68 | A |
| 12 | D4000A | A.03 | Single Scan Analysis | 90-115% | UPC-E | 0 123456 5 | A/05/660 | 4.0/05/660 | A | 64 | A | 81 | A | 1 | A | 69 | A |
| 13 | | | | | | | | | | | | | | | | | |
| 14 | | | | | | | | | | | | | | | | | |

Example of Inspection results chart

